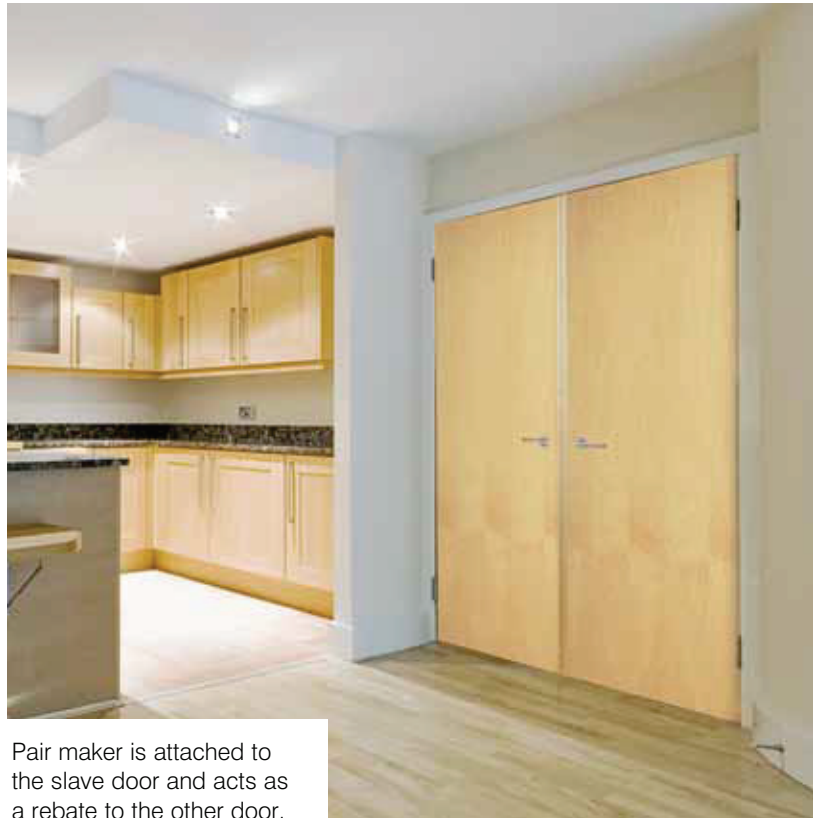


Pair makers

- Pair makers allow for the creation of a door pair on any **35mm thick** internal door with our range.
- No rebating of doors required as the pair maker acts as the rebate.
- Available in Oak and White primed versions.
- Provides a flexible solution for converting two doors into a pair of doors.
- Pair maker can be fitted to enter left or right hand door.
- Simply fix the pair maker to the door you want to keep shut and allow the second door to open freely.
- Unbolt the second door to allow both doors to open simultaneously.
- For installation apertures add 10mm to the overall width of two doors (not including clearance).

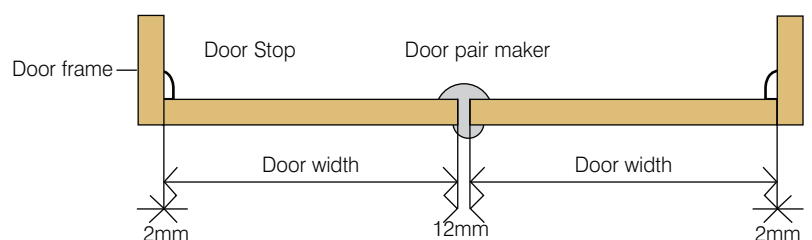


Flush pair example



Flush pair example

Code	Description	Price
61569	White primed pair maker	£39.00
61570	Oak pair maker	£49.00



The internal frame sizes (rebate to rebate) including the door pair maker and allowing for clearances are approximately as follows:

Door size and door pair maker:

2 x 610mm doors plus door pair maker = 1236mm

2 x 762mm doors plus door pair maker = 1540mm

2 x 686mm doors plus door pair maker = 1388mm

2 x 838mm doors plus door pair maker = 1692mm